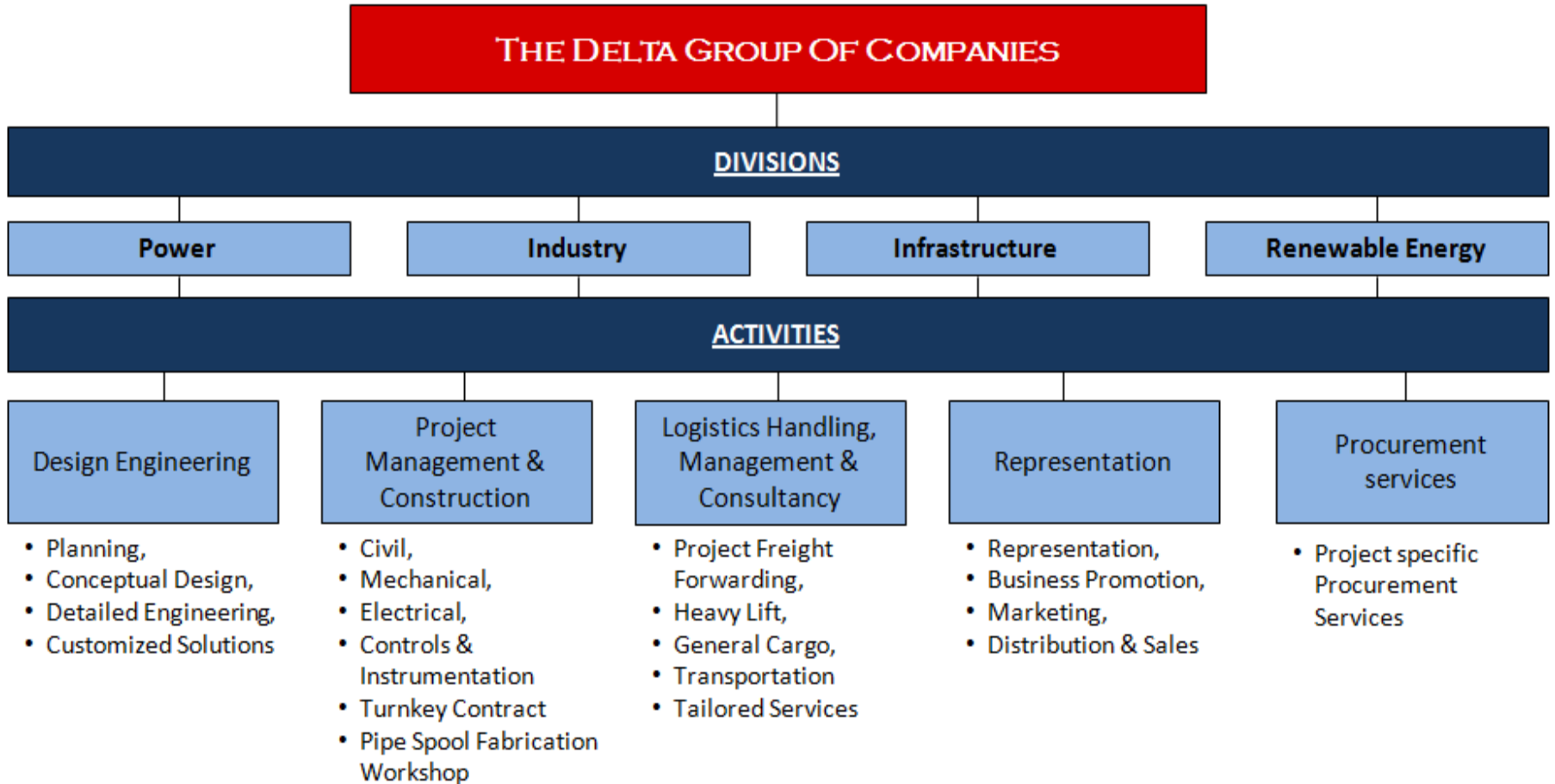


# THE DELTA GROUP OF COMPANIES

LOGISTICS  
MANAGEMENT &  
CONSULTANCY  
EXPERIENCE





## PROJECT FREIGHT FORWARDING

- Import / Export Regulation Advice
- Import / Export Permits
- Development of Shipping Schedule
- Supervision of Packing, Loading & Unloading
- Preparation and Verification of Shipping Documents
- Custom and Port Handling
- Liaison with Government agencies for permissions



## GENERAL CARGO

- Export / Import
- Custom Clearance
- Port Handling
- Packing
- Transportation
- Warehousing & Storage
- Documentation
- Duty Drawback / Refund
- Insurance Survey





## HEAVY LIFT

- Unloading
- Loading
- Shifting
- Placement





## TRANSPORTATION

### RAIL

- Liaison with Rail Authorities
- Requisition of rakes
- General Cargo
- Super Heavy & ODC Cargo

### SEA

- Hydrographic Survey
- Lighterage
- Jetty Construction
- Liaison with
- Mercantile Authorities



### ROAD

- Feasibility of route
- General Cargo
- ODC Cargo
- Heavy Cargo
- Construction of bye-passes

### AIR

- Consolidation of Inbound & Outbound Cargo
- Receiving, Shifting, Devanning, Depalletising etc.
- Cargo handling at air terminus



## TAILORED SERVICES

### EQUIPMENT MANAGEMENT

- Equipment Supply
- Operation of Equipment
- Maintenance
- Equipment Management



### MATERIAL CONTROL

- Receive Material
- Unloading & Stacking
- Tally & Inspection
- Inventory Control
- Material Issue
- Reconciliation





## Client –

**Toshiba JSW Power System Company Pvt. Ltd. , India**

## Project –

**EPL Project B – Feasibility Study**

## Scope of work –

- Feasibility study and recommendation Report regarding Ennore Port and Chennai Port Facilities for handling 575 MT Turbine Generator package
- Alternate route Plan for transportation and handling of Turbine Generator Package (weighing 575 MT) from TJPS site to Ennore/Chennai Port

## Salient Features –

- **Feasibility route study for Toshiba Generator Stator Movement**





## Client –

**Toshiba JSW Power System Company Pvt. Ltd. , India**

## Project –

**Meja 2 x 660 MW Super Critical TPP**

## Scope of work –

- Preparation of transport vendor Pre Qualification document
- Evaluation, Short listing of Transport Vendor,
- Preparation of RFQ documents for transportation scope of work.
- Preparation of Bench Mark Cost for transportation work
- Price negotiation with Transport Vendor
- Evaluation and Selection of transport Vendor
- Transport Route survey
- Carried out Bathymetry Survey of River Ganges from Zamania to Allahabad and at Tons River from Allahabad to Kodhar Village Bridge to study the feasibility of Barge transportation of Turbine Generator from Haldia/Kolkata to Meja Project Site.
- Technical Review on Transporters Methodology of Handling Turbine Generator package, Jetty Construction, Barge and Tug stability and capacity for operation

## Salient Features –

- **Consultancy Services**



## **Client –**

**Toshiba JSW Power System Company Pvt. Ltd. , India**

## **Project –**

**Kudgi 3 x 800 MW Super Critical TPP**

## **Scope of work –**

- Preparation of transport vendor Pre Qualification document
- Evaluation, Short listing of Transport Vendor,
- Preparation of RFQ documents for transportation scope of work.
- Preparation of Bench Mark Cost for transportation work
- Price negotiation with Transport Vendor
- Evaluation and Selection of transport Vendor
- Transport Route survey
- Technical Review on Transporters Methodology of Handling Turbine Generator package, Jetty Construction, Barge and Tug stability and capacity for operation

## **Salient Features –**

- **Consultancy Services**



## Client –

Mitsui & Co. Ltd., Japan

## Project –

**2 x 500 MW Anpara 'B' Super Thermal Power Project at Anpara, U.P.**

## Scope of work –

- Custom and Port Documentation of cargo arriving at Mumbai, Kandla and Calcutta Ports,
- Clearance and Transportation of all Imported General and Over Dimensional Cargo (ODC) cargo from Indian Ports to the Job site at Anpara
- Providing heavy construction equipment and its operation and maintenance.
- Fabrication & Erection of Structural Steel of Ash handling system.

## Salient Features –

- **Single largest contract of clearance and transportation awarded in India during that period,**
- **Use of Special Rail Wagon to transport Super ODC Cargo and;**
- **Clearance and Transportation of approx. 300,000 F.T. of Cargo and Equipment**



## Client –

**Toshiba JSW Power System Company Pvt. Ltd. , India**

## Project –

**Kudgi 3 x 800 MW Super Critical TPP**

## Scope of work –

- Preparation of transport vendor Pre Qualification document
- Evaluation, Short listing of Transport Vendor,
- Preparation of RFQ documents for transportation scope of work.
- Preparation of Bench Mark Cost for transportation work
- Price negotiation with Transport Vendor
- Evaluation and Selection of transport Vendor
- Transport Route survey
- Technical Review on Transporters Methodology of Handling Turbine Generator package, Jetty Construction, Barge and Tug stability and capacity for operation

## Salient Features –

- **Consultancy Services**



## **Client –**

**International Airport Authority of India (IAAI), New Delhi**

## **Project –**

**Indira Gandhi International Airport Cargo Complex, New Delhi**

## **Scope of work –**

- Recovery of Cargo from Airlines,
- Proper Stacking and Accounting,
- Presenting required packages for Customs Examination and;
- Re-packing and Delivery

## **Salient Features –**

- **Handling all Export, Import and Transit Cargo at the International Airport's Cargo Complex in New Delhi.**



## Client –

**Nippon Kokan K.K. (NKK), Japan**

## Project –

**ONGC's Ethane / Propane (C2/C3) Recovery Plant Project**

## Scope of work –

- Custom / Port Documentation and Clearance,
- Mid-stream discharge of ODC Cargo onto barges and;
- Transportation of General and ODC Cargo from Mumbai Port to Job site
- Stacking and Accounting of cargo

## Salient Features –

- **Handled approx. 21,000 tons of cargo**
- **Lithorage Operations**
- **Cargo included pieces of over 270 MT and over 49 m in length**



## Client –

**Mitsui & Co. Ltd., Japan**

## Project –

**Nhava - Sheva Port Trust Project - Phase I**

## Scope of work –

- Procurement of Import License,
- Customs Clearance and Port Handling,
- Mid-stream discharge,
- Shore handling on specially designed Ro-Ro Jetty,
- Inland transportation and;
- Stacking and Delivery of cargo.

## Salient Features –

- **Handling of Construction Equipment, Plant and Machinery, Marine Equipment and Piling pontoons (weighing 2500 MT each).**
- **Handled approx. 55,000 tons of total cargo.**



## Client –

Hyundai Corporation, Korea

## Project –

Nhava - Sheva Port Trust Project - Phase II

## Scope of work –

- Procurement of Import License,
- Customs Clearance and Port Handling,
- Mid-stream discharge,
- Shore handling on specially designed Ro-Ro Jetty,
- Inland transportation from Mumbai to Sheva and;
- Stacking and Delivery of cargo.

## Salient Features –

- **Handling of Construction Equipment and large volumes of Steel and Cement.**
- **Handled approx. 60,000 tons of cargo. Largest piece weighing 86 tons (8 m x 4.8 m).**





## Client –

**Ansaldo S.p.a., Italy**

## Project –

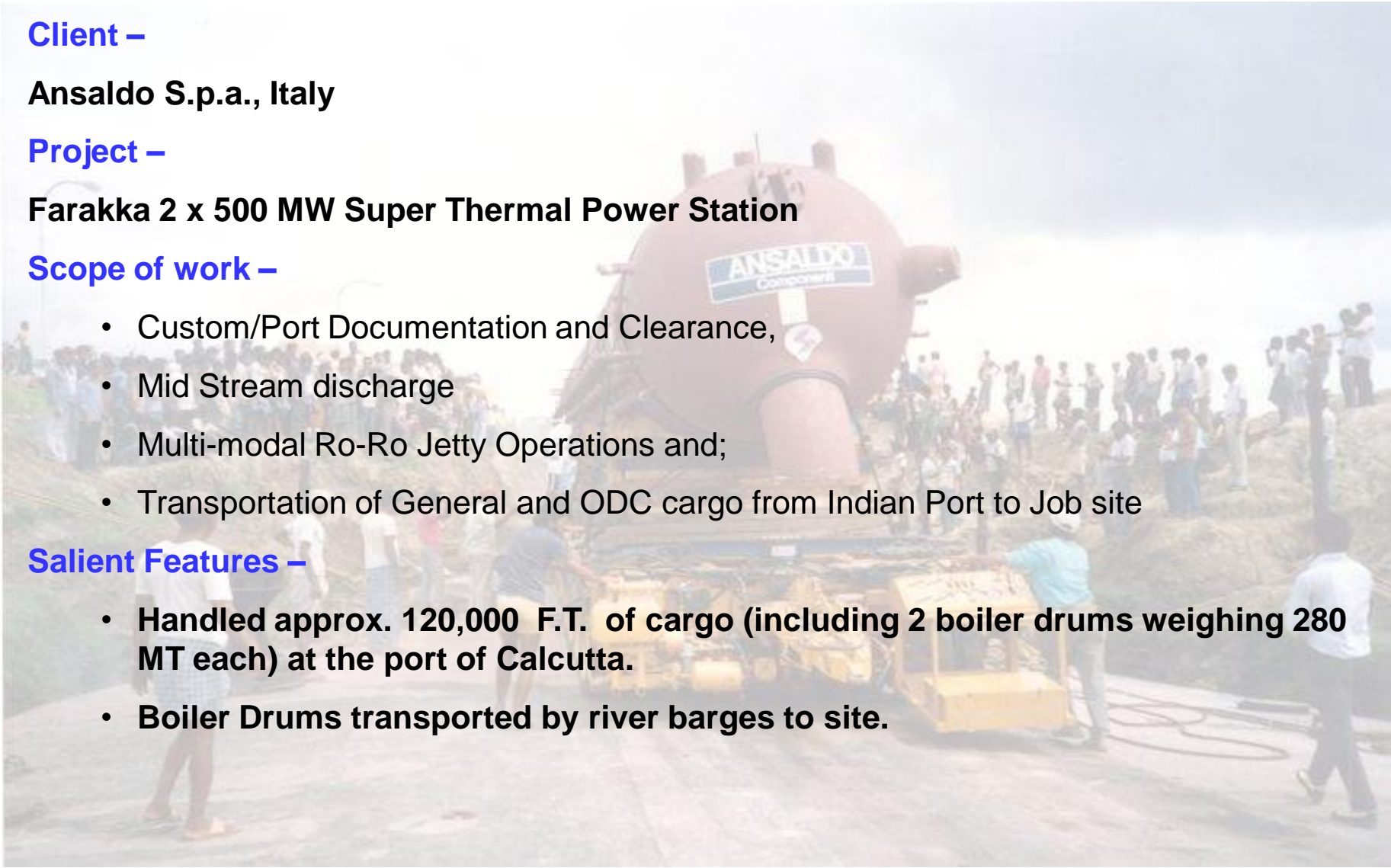
**Farakka 2 x 500 MW Super Thermal Power Station**

## Scope of work –

- Custom/Port Documentation and Clearance,
- Mid Stream discharge
- Multi-modal Ro-Ro Jetty Operations and;
- Transportation of General and ODC cargo from Indian Port to Job site

## Salient Features –

- Handled approx. 120,000 F.T. of cargo (including 2 boiler drums weighing 280 MT each) at the port of Calcutta.
- Boiler Drums transported by river barges to site.





## Client –

**Marubeni Corporation, Japan**

## Project –

**NTPC's 650 MW Gandhar Combined Cycle Power Project, Gujarat**

## Scope of work –

- **Custom & Port Clearance and**
- **Transportation of General, Heavy and ODC Cargo.** (Heavy and ODC cargo was offloaded midstream and transported to the specially constructed Ro-Ro Jetty from where it was transported on land to job site.)

## Salient Features –

- **84 packages (65 tons to 110 tons) of Super Heavy Lift, Heavy Lift and ODC Cargo handled**
- **Total volume of the cargo approx. 70,000 F/Tons.**





## **Client –**

**Sumitomo Corporation, Japan**

## **Project –**

**APGPCL's 170 MW Combined Cycle Power Project at Vijjeshwaram**

## **Scope of work –**

- Custom & Port Clearance of all Cargo and Equipment,
- Transport of ODC Cargo by barge on the High Sea and River,
- Ro-Ro Jetty construction for receiving Super ODC Cargo and;
- Receiving, Storing and Distributing Cargo as per Construction Schedule.

## **Salient Features –**

- Transportation of ODC Cargo by barges for a distance of 80 kms.
- Handled approx. 12,000 F.T. of cargo and equipment
- Construction of Power Plant on turnkey basis



## **Client –**

**Mitsubishi Group, Japan**

## **Project –**

**Sanjay Gandhi Post Graduate Institute of Medical Sciences, Lucknow**

## **Scope of work –**

- Custom / Port Clearance and Handling,
- Transport of Cargo to job site,
- Uploading, Accounting and Delivery of cargo
- Supply of Tools and Manpower for Erection of Equipment within hospital complex.

## **Salient Features –**

- **Transportation and Handling of Sensitive Medical Equipment.**
- **Equipment transported from Mumbai and Kandla Ports to Lucknow, a distance of approx. 1500 kms.**



## **Client –**

**Mitsui – OSK Lines, Japan**

## **Project –**

**Northern India Cargo Booking**

## **Scope of work –**

- Agents for Mitsui – OSK for north India,
- Booking cargo on behalf of Mitsui – OSK Lines.

## **Salient Features –**

- **Cargo Agents for Mitsui – OSK Lines for North India (including Punjab, Haryana, Delhi, U.P. and Rajasthan)**



## **Client –**

**S.G.P.G.I., India**

## **Project –**

**Sanjay Gandhi Post Graduate Institute of Medical Sciences, Lucknow**

## **Scope of work –**

- Air Cargo Consolidation,
- Liaison with suppliers,
- Custom / Port Clearance at Mumbai and Delhi,
- Transport of Cargo to job site and;
- Unpacking and Delivery of cargo.

## **Salient Features –**

- **Transportation and Handling of Sensitive Medical Equipment.**
- **Equipment transported from Mumbai and Delhi to Lucknow.**



## Client –

**Essar Constructions Ltd.**

## Project –

**ONGC's A-7 South Bassein – Hazira Pipeline**

## Scope of work –

- Custom / Port Clearance and Handling at Port,
- Inspection and Assessment of Duties,
- Transportation of cargo by road and;
- Receiving cargo, Accounting and Storage of cargo.

## Salient Features –

- **Cargo included various items such as valves, fittings, pipes, pressure vessels, heat exchanges, level gauges etc.**



## Client –

**Central Warehousing Corporation of India**

## Project –

**Container Freight Station, New Delhi**

## Scope of work –

- Receive, Handle and Account for containers and their movements,
- Stuffing and De-stuffing of containers,
- Handle and Transport of containers from various ports in India at Container Freight Station, New Delhi.

## Salient Features –

- **Receive, Handle and Transport of containers.**





## Client –

**Punj Sons Pvt. Ltd., New Delhi**

## Project –

**ONGC's South Bassein Pipeline Project**

## Scope of work –

- Custom / Port Clearance and Handling at Port,
- Transportation to Coating Yard
- Unloading and Stacking
- Arrangement of suitable trailers, cranes and;
- Management of Operation and Manpower.

## Salient Features –

- **Cargo included 7,000 12 m long steel pipes (36" diameter) weighing 7 MT each.**
- **Total weight of pipes approx. 49,000 MT**
- **After coating, weight of pipes rose to 17.5 MT each totaling to 122,500 MT.**



## Client –

**Dodsal Pvt. Ltd., India**

## Project –

**ONGC's Umrat – Hazira Onshore Pipeline**

## Scope of work –

- Equipment Deployment and Maintenance,
- Manpower and tools supply,
- Transportation of pipes from coating yard to delivery point,
- Loading and Unloading of pipes and lashing and,
- Site arrangement of cranes and trailers.

## Salient Features –

- **Equipment supply and management,**
- **Transportation of 16" OD Coal Tar Enamel coated pipes from Mangalore to Hazira covering a distance of approx. 1400 kms.**



## Client –

**Dodsal Pvt. Ltd., India**

## Project –

**GAIL's HBJ Gas Pipeline Project**

## Scope of work –

- Preliminary route survey,
- Loading of pipes at coating yard and;
- Transportation and Delivery to Right of Way.

## Salient Features –

- **World's 3<sup>rd</sup> longest pipeline at that time**
- **World's longest underground pipeline at that time covering a distance of 1760 kms from Hazira to Jagdishpur.**



## Client –

**Elecon Engineering, India**

**Hudsons Freight Carriers, U.K.**

## Project –

**Chittagong Urea Fertilizer Ltd., Bangladesh**

## Scope of work –

- Transportation of machinery and conveyor systems from Elecon Factory, Gujarat, to Mumbai Port,
- Customs Clearance,
- Supervising the shifting of containers and;
- Transportation of containers to Bangladesh via a suitable vessel.

## Salient Features –

- **A total of 250 containers were handled and transported via suitable sea vessel to Bangladesh.**



## Client –

**Barelia Chemicals & Traders Pvt. Ltd.**

## Project –

**Mid-stream discharge of imported cargo**

## Scope of work –

- Mid-stream discharge and receiving of cargo onto dumb and self-propelled barges,
- Off-loading cargo onto Jetty
- Handling, Loading and Transportation of cargo to various destinations.

## Salient Features –

- **Handled approx. 50,000 tons of general and bagged cargo at Mumbai Port.**



## Client –

**Mitsui Engineering and Ship Building, Japan**

## Project –

**National Fertilizer Limited**

## Scope of work –

- Custom / Port Clearance,
- Port Handling,
- Transportation of General and ODC Cargo to job site and;
- Unloading and Delivery at site.

## Salient Features –

- **General and ODC Cargo transported to 2 different terrorist infested areas.**
- **Handled approx. 20,000 tons of cargo with largest piece of 60 tons (17 m x 5.5 m).**



## **Client –**

**Technoexport, Russia**

## **Project –**

**ONGC's Cambay Basin Oil Exploration Project**

## **Scope of work –**

- **Custom / Port Documentation and Clearance and;**
- **Transportation of all Cargo from Port to Job site**



## MECHANICAL DEPARTMENT

**STRUCTURAL FABRICATION / ERECTION OF OVER 20,000 TONNES INCLUDING SITE FABRICATION.**

**PIPING WORK OF OVER 550,000 INCH MTR. CONSISTING OF MAINLY HIGH PRESSURE PIPING.**

**ERECTION OF EQUIPMENT FOR HRSG/TURBINE ETC. APPX. 7,500 MT WHICH INCLUDES GAS TURBINE, STEAM TURBINE PR. PARTS, CHIMNEY, DUCTS ETC.**

## CLIENT'S TAILORED SERVICES

**OVER 1 MILLION TONNES OF PROJECT CARGO HANDLED.**

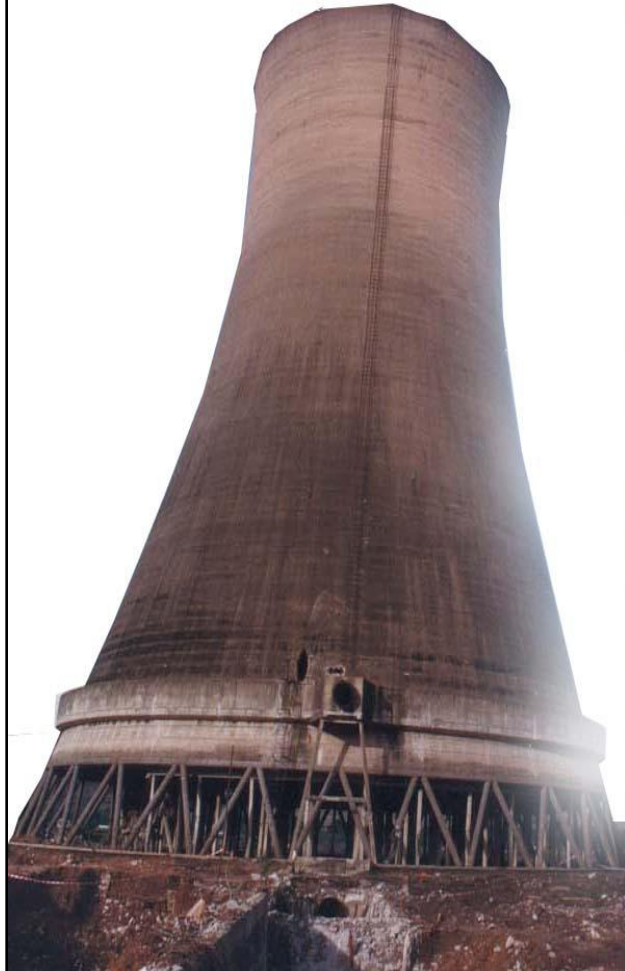
**OVER 150 NOS. OF ODC WEIGHT RANGING FROM 90 TONNES TO 320 TONNES HANDLED BY ROAD, RAIL & BARGES (RO-RO).**

**6 NOS OF RO-RO JETTIES CONSTRUCTED TO RECEIVE PACKAGES WEIGHING FROM 120 MT TO 320 MT.**

**OVER 50 MILLION KMS TOTAL ROAD DISTANCE COVERED FOR PROJECT CARGO .**

**HEAVY PACKAGES WEIGHING OVER 2100 MT PLACED ON TO FOUNDATION AT SITE.**

**For the first time in India  
Demolition of Super Structure by  
CONTROLLED DEMOLITION**



## **Badger Energy Inc.**

Jindal Tractebel Power Company Ltd.  
Power Project  
Torangallu, India

**ONE MILLION  
SAFE PROJECT  
MAN HOURS**

Achievement Participant Award  
to

**DELTA MECHCONS (INDIA) LTD.**

January, 1997

BADGER ENERGY INC.  
POST BOX NO. 8, TORANGALLU,  
DIST. BELLARY - 583123. INDIA.

## **Badger Energy Inc.**

Jindal Tractebel Power Company Ltd.  
Power Project  
Torangallu, India

**TWO MILLION  
SAFE PROJECT  
MAN HOURS**

Achievement Participant Award  
to

**DELTA MECHCONS (INDIA) LTD.**

May, 1997

BADGER ENERGY INC.  
POST BOX NO. 8, TORANGALLU,  
DIST. BELLARY - 583123. INDIA.



THANK YOU!

THE DELTA GROUP

*COMMITTED, CONSISTENT, CAPABLE*